

One of the main objectives of the HEPROGRESS project is to **raise awareness and promote information** about health inequalities among politicians, other decision makers, and in the general public. A means to produce such information has been a **questionnaire survey** among the participating municipalities in Østfold County, Norway and Vidzeme planning region, Latvia.

The data from these two surveys are now being analysed, and the first results have been disseminated to the municipalities.

Below we present the levels in the local populations of restrictions, caused by poor health and illnesses, of activities and social participation.

**The results indicate** the percentage in various age groups of those who reported that they are severely restricted in carrying out usual daily activities. There is a separate graph or curve for different educational groups. Separate analyses were made for men and women, but there were only minor differences between the genders in regard to the social differences.

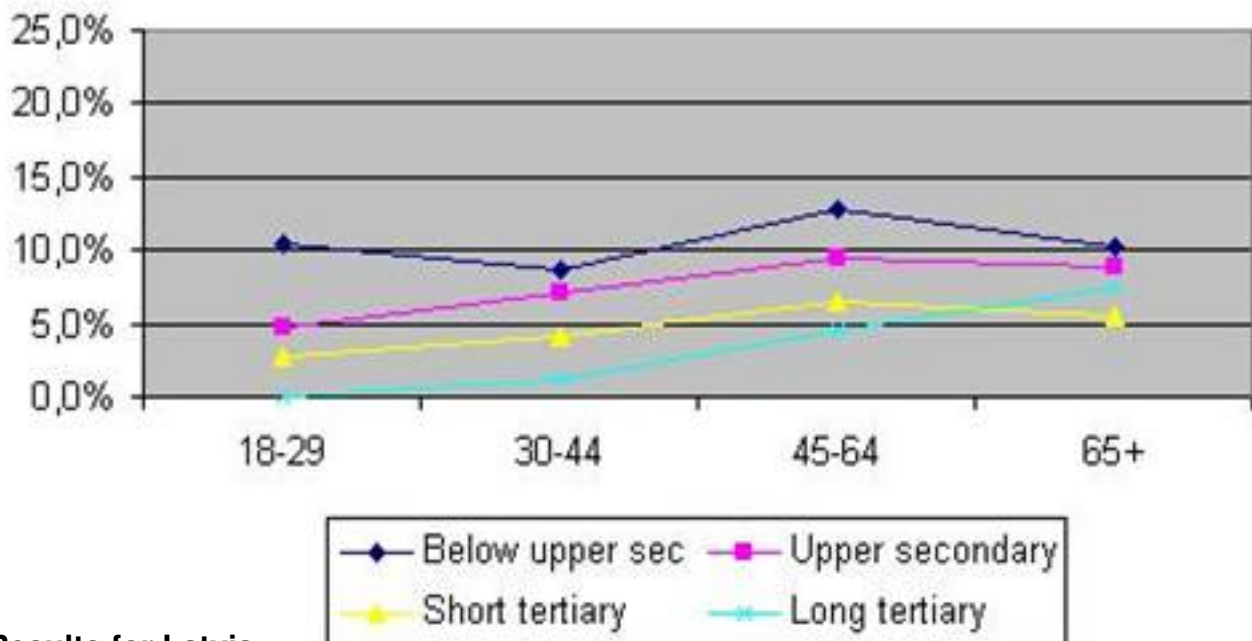
**The figures** below present the percentage of those who report severe restrictions in daily activities because of illness and poor health. In age groups and educational groups. Blue lines are for those with lowest educational level (only primary school), and green for those with highest educational level (university level).

### Results for Norway:

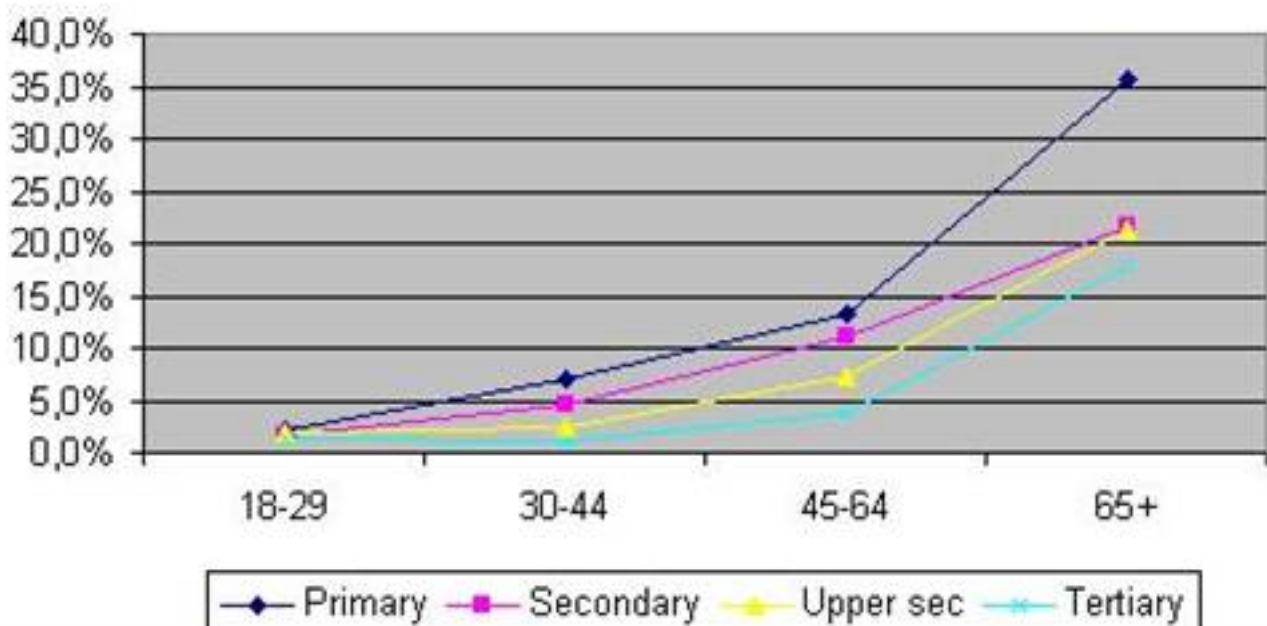
## New results from the HEPROGRESS survey on social inequalities in health

Written by Karolina

Thursday, 04 October 2012 10:33



### Results for Latvia:



Information about the survey can be found at [www.heprogress.eu](http://www.heprogress.eu)