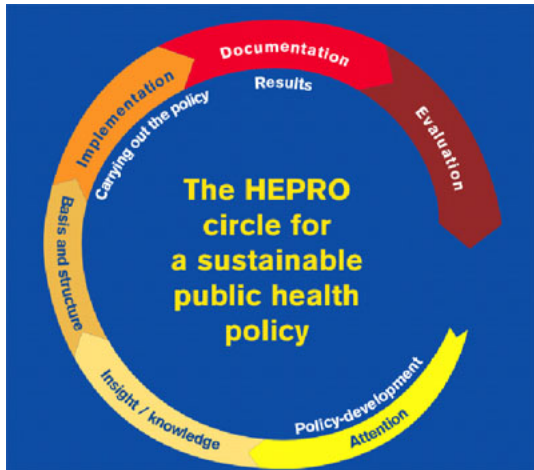


Systematic approach gains sustainable effects

Written by Admin

Tuesday, 30 November 1999 00:00

Public health work requires persistent work from all actors, said project leader Arvid Wangberg.



□ In the HEPRO project we offer tools to our partners that allow them to systematically work towards both long-term and short-term perspectives in public health work, said project leader Arvid Wangberg.

The method is called the «HEPRO circle for a sustainable public health policy». The method can be divided into six stages, and follows a preliminary four year planning period. The first two steps aim to identify the local situation.

□ The local situation is identified through SWOT-analyses. Once the data from the health surveys are collected, we will gain more insight, Wangberg said.

In addition to improved local information, it is important to create a platform for joint action when implementing public health policies. When policies are implemented it is important to study the results and processes of the activities □ based on systematically collected data and other kinds of information. The response from the evaluations will form the starting point for future planning circles.

Systematic approach gains sustainable effects

Written by Admin

Tuesday, 30 November 1999 00:00

□ In the HEPRO project we have not had time to distribute the entire planning circle. We aim to create a platform enabling local regions to conduct their own public health work based on systematic approaches, Wangberg said.

According to Wangberg, the operations in HEPRO projects are based on systematic theories, but are at the same time closely related to communicative planning theories. In short, this means that communicating openly and conducting relevant actions related to public health work is both important and necessary □ and can be achieved through thorough planning.